

SHEN ZHEN SHI HONGZHOU OPTOELECTRONICS TECH CO.,LTD

Part Number:

B525RC

Page: 1/3

1.SPECIFICATIONS

(1) Absolute Maximum Rating

(Ta=25℃)

Item	Symbol	Absolute Maximum Rating	Unit
Forward Current	IF	20	mA
Peak Forward Current	IFP	50	mA
Reverse Voltage	VR	3	V
Power Dissipation	PD	40	mW
Electrostatic Discharge (HBM)	/	/	V
Operating Temperature	TOP	-40℃~80℃	℃
Storage Temperature	TSTG	-40℃~100℃	℃
Lead Soldering Temperature	TSOL	260℃ FOR 5 SECONDS	

IFP Conditions: Pulse Width≤10msec.and duty ≤1/10

(2) Initial Electrical/Optical Characteristics

(Ta=25℃)

Item	Symbol	Condition	Min	Typ	Max	Unit
Forward Voltage	VF	IF=20(mA)	3	/	3.4	V
Reverse Current	IR	VR=5(V)	/	/	20	μ A
Viewing Angle	2 θ 1/2	IF=20(mA)	/	30	/	deg
Luminous Intensity	IV	IF=20(mA)	5000	/	7000	mcd
Dominant Wavelength	λ	IF=20(mA)	460	/	470	
Recommend Forward Current	IF(Rec)	/	/	20	/	mA

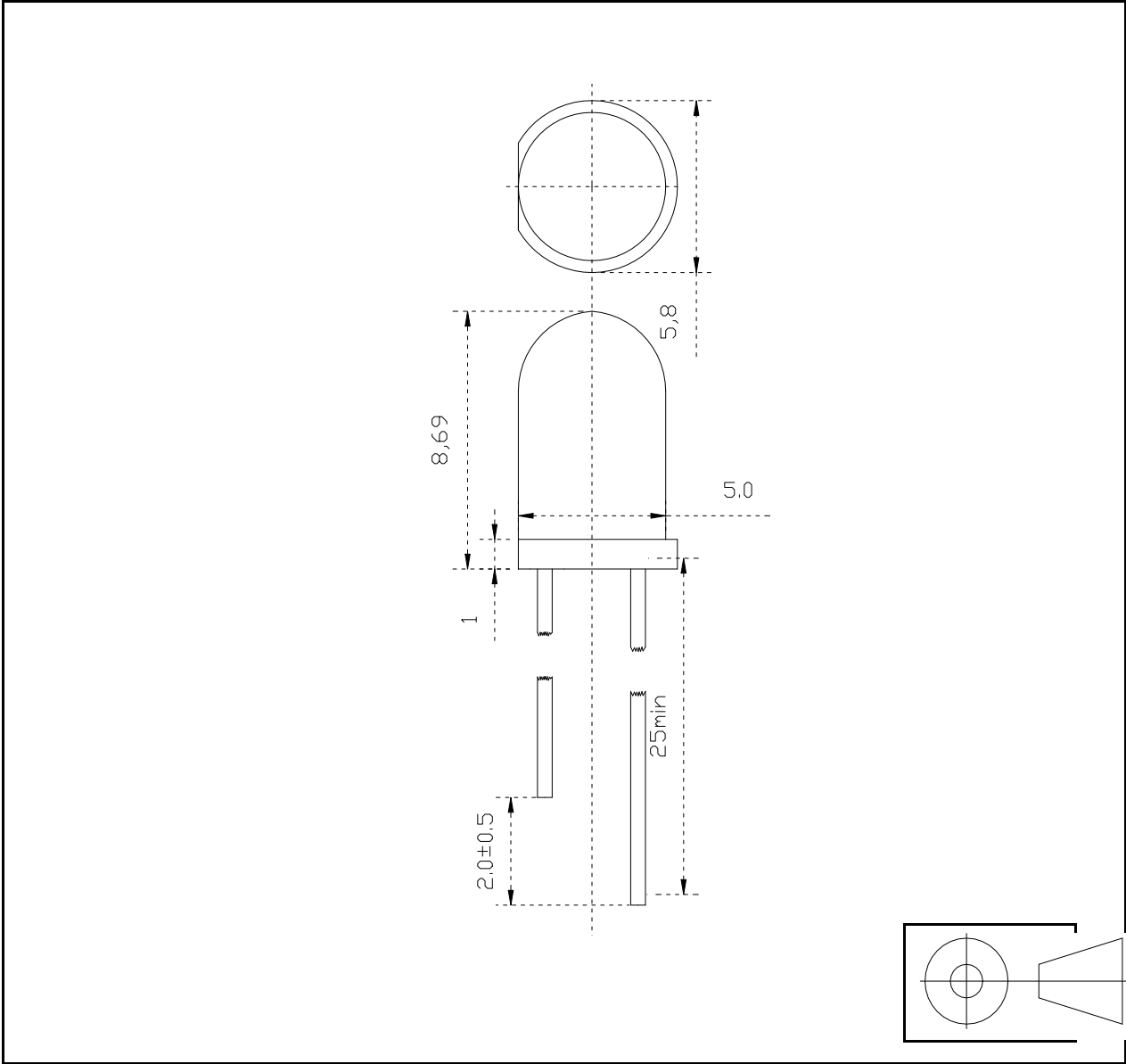
2.TYPICAL INITIAL OPTICAL/ELECTRICAL CHARACTERISTICS

3.OUTLINE DIMENSIONS AND MATERIALS

Material as follows: Resin :Epoxy

Lead frame:Ag plating Copper alloy

■ Package Dimension:



Part Number	Chip		Lens Color
	Material	Emitting Color	
F32G3	AlGaInp	BULE	

- NOTES:
- 1.All dimension are millimeters
  - 2.Tolerance is ±0.25mmunless otherwise noted.

SHEN ZHEN SHI HONGZHOU OPTOELECTRONICS TECH CO.,LTD

## ■ Typical Electro-Optical Characteristic Curves:

Fig1.Forward Current vs.Forward Voltage

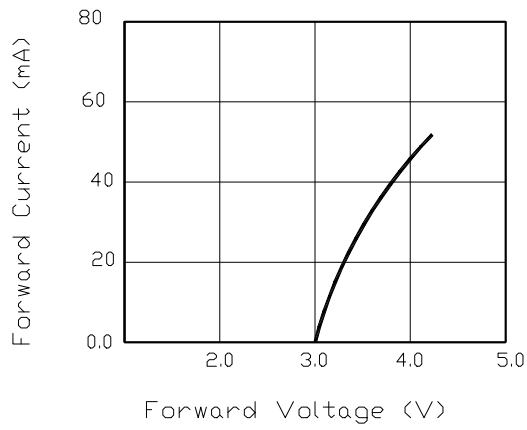


Fig2.Relative Intensity vs. Forward Current

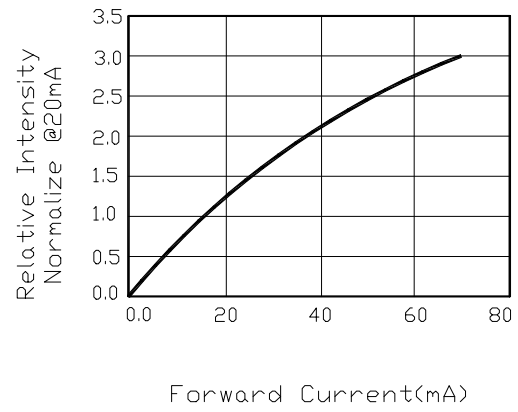


Fig3.Forward Voltage vs. Temperature

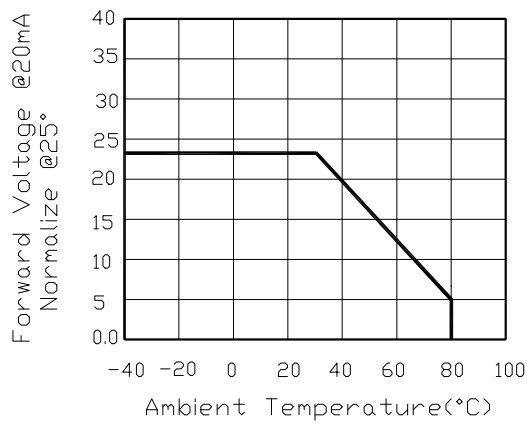


Fig4.Relative Intensity vs. Temperature

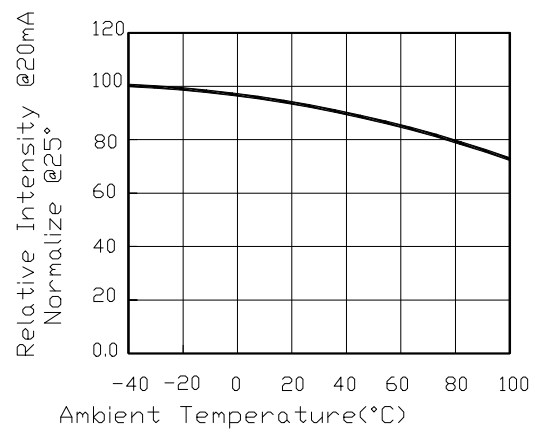


Fig5.Relative Intensity vs. Wavelength

